



THE
WATERSIDE
- F & B HORIZON -

DESSERTS

BANOFFEE WAFFLE	£6
Banana, vanilla ice-cream & toffee sauce	
ETON MESS	£6
Whipped cream, meringue & strawberries	
ALMOND FRANGIPANE TART	£6.5
Vanilla ice-cream	
SUMMER FRUIT CHEESE CAKE	£6.5
Citrus syrup & fresh berries	
DARK CHOCOLATE TRUFFLE TORTE	£6.5
Milk chocolate sauce & strawberry ice-cream	
DOM PEDRO	£6.5
An adult milkshake. Choose from whisky, Kahlua, Amaretto, Baileys or Amaretto (25ml)	
SELECTION OF YORVALE ICE CREAM	£5.5
Vanilla, chocolate, strawberry, maple & walnut, peaches and cream—3 scoops, you choose!	
AFFOGATO	£4.5
Hot espresso & vanilla ice cream	
SORBET	£5.5
Ask your server for our current flavours	
CHEESE BOARD	£9.5
Cornish Camembert, Shropshire Blue, Devonshire Cheddar, apricot & apple chutney	
SHARING DESSERTS	£12.5
Banoffee waffle, summer fruit cheese cake & dark chocolate truffle torte	

TEAS & COFFEES

TWININGS TEA £2.5

English Breakfast, Earl Grey, Green, Mint, Camomile, Cranberry and Raspberry, Redbush

We use a medium strength Arabica beans for all our coffees. If you would like yours stronger or weaker please ask your server.

FLAT WHITE £2.5

AMERICANO £2.5

CAPPUCCINO £2.75

LATTE £2.75

ESPRESSO £2

DOUBLE ESPRESSO £3

MACCHIATO £2.7

MOCHACCINO £3.25

HOT CHOCOLATE £2.5

LIQUEUR COFFEE £6

DESSERT WINES

Buitenverwachting 1769 Muscat

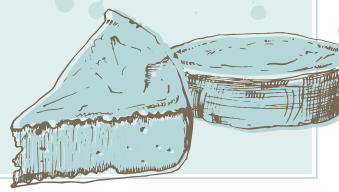
per 50ml £3
375ml Bottle £28.5

Please note that all the coffees above are available decaffeinated.

If you would like something stronger, we also stock a range of single malt whiskeys, brandies and liqueurs. Please ask your server for details. All allergen information available upon request.

An optional service charge of 12.5% may be added to your bill

* Prices include VAT at the current rate





THE
WATERSIDE
- F & B HORIZON -